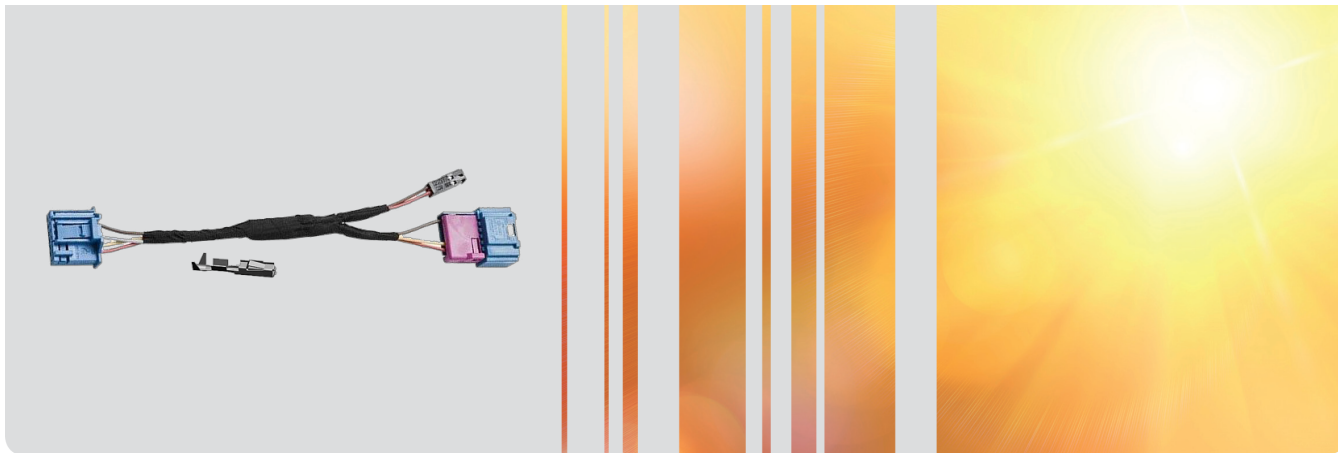


Installation Instructions

Adapterkit ThermoConnect TCon2 and VW Telestart



1 Safety information

You find the safety instructions in the installation and operation manual for the ThermoConnect TCon2 device.

2 Scope of Delivery: ThermoConnect TCon2 and VW Telestart

This adapter kit is an addition for the ThermoConnect TCon2, to install in VW vehicles with a built-in Telestart receiver unit. Install both the ThermoConnect TCon2 and the adapter kit for a functioning system.

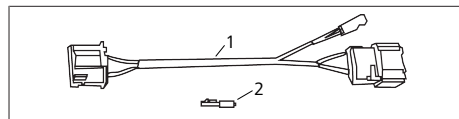


Fig.1 Adapter wiring harness

Nr.	Description	Part nr.
1	Adapter wiring harness TC1.1	9011125B
2	Crimp contact AMP 0-963726-1	85601A

3 Installation with VW Telestart

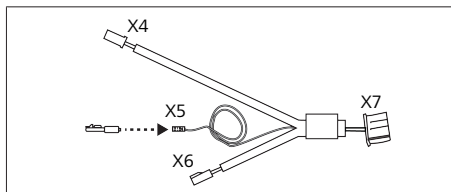


Fig.2 ThermoConnect TCon2 wiring harness

Step 1: Connect the crimp contact with the grey cable (X5) of the ThermoConnect wiring harness. Before connecting, remove the black covering material.

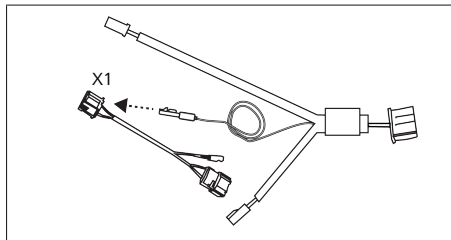


Fig.3 Insert crimp contact into X1

Step 2: Plug the grey cable with the crimp contact into the X1 Pin 3 connection of the wiring harness 9011125B.

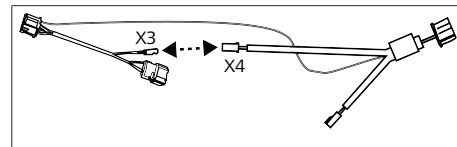


Fig.4 Connect the TCon2 cable to the adapter wiring harness

Step 3: Connect the 4-Pin connector (X4) of the ThermoConnect wiring harness with the 4-Pin connector (X3) of the adapter wiring harness 9011125B.

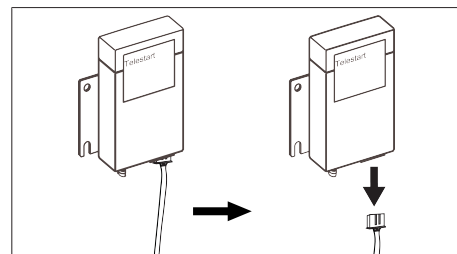


Fig.5 Disconnect VW Telestart

Step 4: Disconnect the VW Telestart receiver.

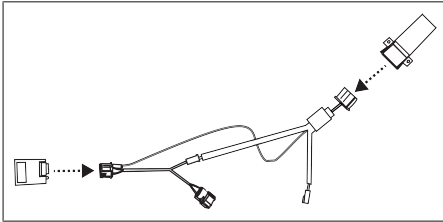


Fig.6 Plug connector into the VW Telestart receiver

Step 5: Plug the blue connector of the 9011125B wiring harness into the VW Telestart receiver. Plug the ThermoConnect TCon2 into the single connector of the second wiring harness in order to connect with the VW Telestart receiver.

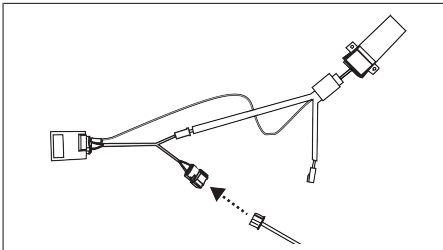


Fig.7 Plug the cable into the red/blue connector

Step 6: Plug the cable, that was originally connected to the VW Telestart receiver, to the red/blue connector of the wiring harness 9011125B.

4 Settings ThermoConnect

In order to work properly, you must adjust the settings of the ThermoConnect TCon2:

1. Open the My Webasto Connect website in web browser or via smartphone app: my.webastoconnect.com.
2. Open **Settings** and select the output option **Output 1**.
3. Enable pulse control and adjust the following settings:
-Pulse duration: 1 sec.
-Delay: 3 sec.
4. Confirm with **OK**, and then save your settings.

You must make the switch between heating and ventilation in the vehicle settings. Look in the vehicle's operating instruction for information.



ATTENTION

Switch off the heater, using the same control device used to switch the heater on.



ATTENTION

The maximum duration that the ThermoConnect TCon2 is on must be shorter than the time set in the driver information system.

These are the original instructions. The English language is binding.

You can request your language if it is missing. The telephone number of each country can be found in the Webasto service centre leaflet or the website of the respective Webasto representative of your country.

Europe, Asia Pacific

Webasto Thermo & Comfort SE
Postfach 1410
82199 Gilching
Germany

Company address:
Friedrichshafener Str. 9
82205 Gilching
Germany

UK only

Webasto Thermo & Comfort UK Ltd
Webasto House
White Rose Way
Doncaster Carr
South Yorkshire
DN4 5JH
United Kingdom

www.webasto.com